

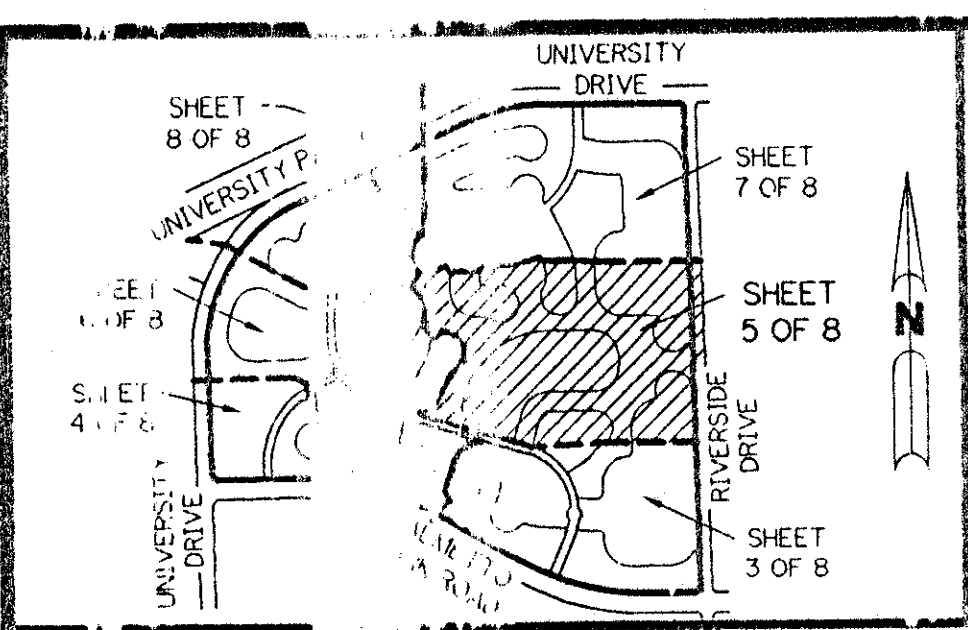
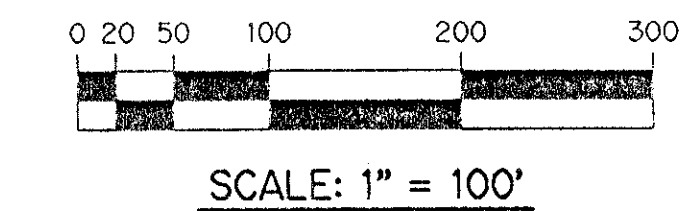
0201-015

A PART OF THE BAY WINDS PLANNED UNIT DEVELOPMENT

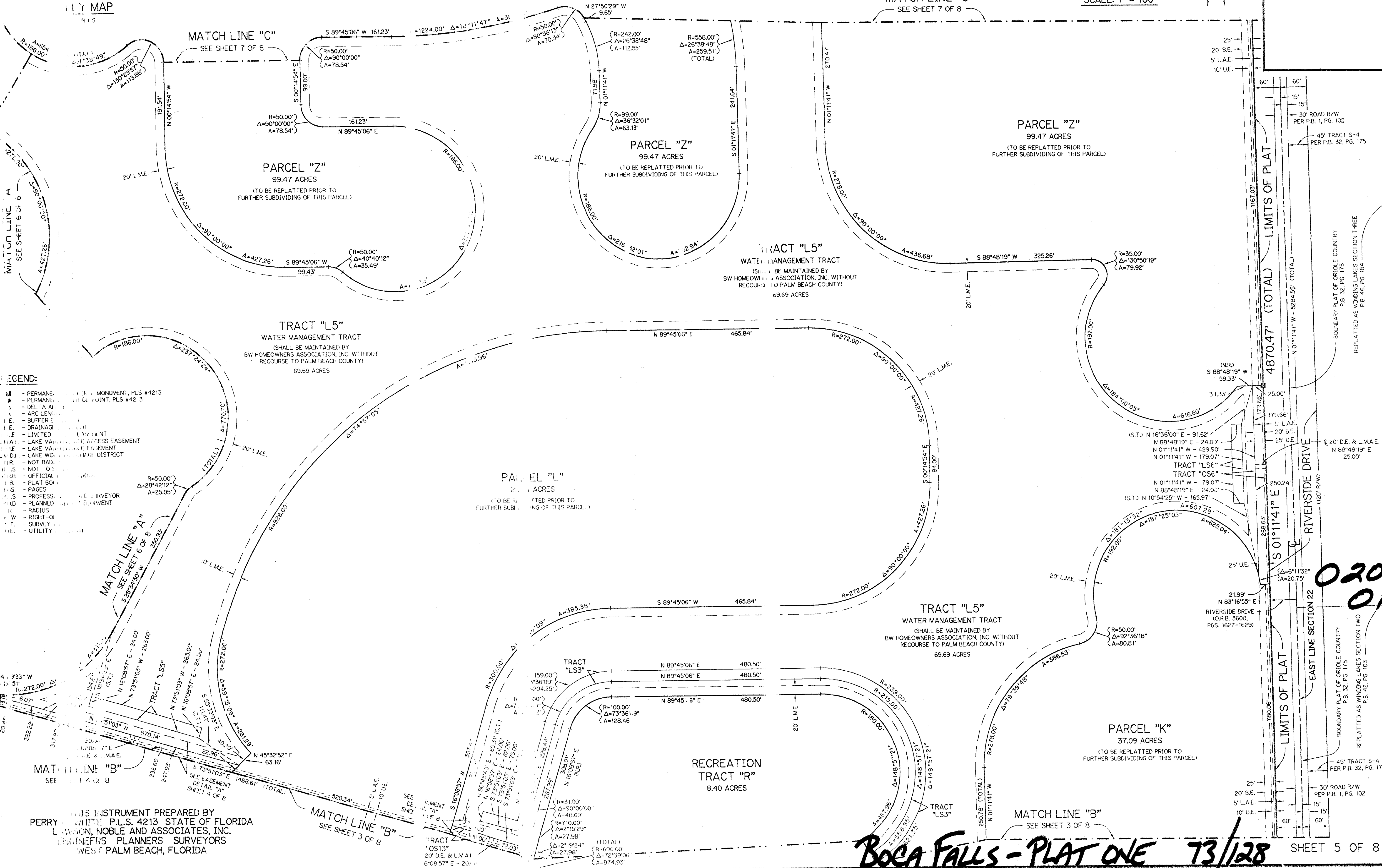
# BOCA FALLS - PLAT ONE

A PARCEL OF LAND LYING IN SECTION 22, TOWNSHIP 47 SOUTH, RANGE 41 EAST.  
PALM BEACH COUNTY, FLORIDA.

SHEET 5 OF 8 MAY, 1994



INDEX MAP  
PLS.



- LEGEND:**
- PERMANENT MONUMENT, PLS #4213
  - PERMANENT SURVEY POINT, PLS #4213
  - DELTA ANGLE
  - ARC LENGTH
  - BUFFER
  - DRAINAGE
  - LIMITED EASEMENT
  - LAKE MANAGEMENT ACCESS EASEMENT
  - LAKE MANAGEMENT EASEMENT
  - LAKE WATERSHED DISTRICT
  - NOT RADIUS
  - NOT TO SCALE
  - OFFICIAL RECORD
  - PLAT BOOK
  - PAGES
  - PROFESSIONAL SURVEYOR
  - PLANNED DEVELOPMENT
  - RADIUS
  - RIGHT-OF-WAY
  - SURVEY
  - UTILITY

SUBDIVISION \* BOCA FALLS - PLAT ONE  
 BOOK 73 PAGE 128  
 FLOOD ZONE AD-1 FLOOD MAP # 1006  
 QUAD # 69 ZONING RT  
 SE 80-47 ZIP CODE 33433  
 SUB NAME BAY WINDS P.U.D.  
 2245 W

T&E-778

0201-015

THIS INSTRUMENT PREPARED BY  
 PERRY WHITE P.L.S. 4213 STATE OF FLORIDA  
 DIVISION, NOBLE AND ASSOCIATES, INC.  
 ENGINEERS PLANNERS SURVEYORS  
 WEST PALM BEACH, FLORIDA